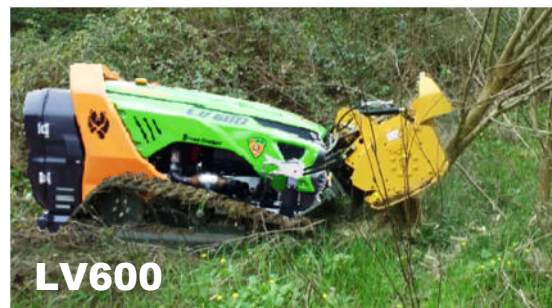


Lanciano July 2017

GREEN CLIMBER



Green Climber is a long range remote controlled machine. Since the operator is not on board it can be used for any job in dangerous, steep or uncomfortable areas







Green Climber is supplied with a high performance flail for roadside maintenance. The flail mower has hydraulic side shifting and there is a choice of other attachments as well for the machine..

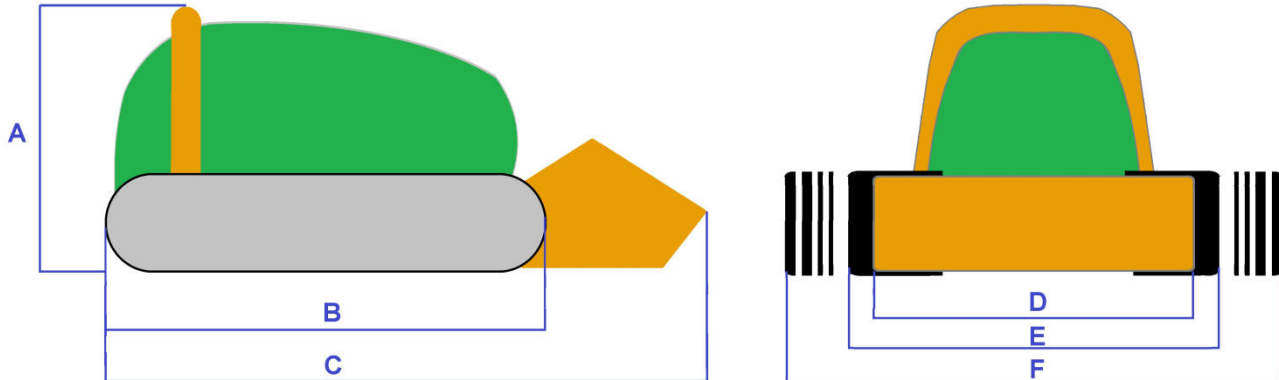


Green Climber has expandable undercarriage tracks: the tracks can be extended a further 400 mm to gain overall width; this, together with its low centre of gravity, allows Green Climber to work along 60° slopes in total safety. Thanks to this particular system and special high grip tracks Green Climber is virtually unstoppable on any slope or terrain.

Engines are equipped with patent system that warranties engine lubrication even when working on high gradient slopes

All machines movements are proportional and remotely controlled

Model	Main technical specs
 Green Climber F300	Remote controlled machine with 1000mm flail mower, fixed undercarriage 1550mm, Kohler Air Cooled 2 cylinder Diesel Engine 23.5hp & 67Nm.
 Green Climber LV300	Remote controlled machine with tracks and flail mower, extendable undercarriage 1150-1550mm, 800mm side shifting of accessory, Kohler Air Cooled 2 cylinder Diesel Engine 23.5hp & 67Nm
 Green Climber LV300 pro	Remote controlled machine with tracks and flail mower, extendable undercarriage 1150-1550mm, 800mm side shifting of accessory, Yanmar Liquid Cooled 3 cylinder Diesel Engine 30.2hp & 85Nm
 Green Climber Power6	Remote controlled machine with 6 wheel drive and flail mower, extendable undercarriage 1500-1900mm, side shifting of accessory 800mm, Yanmar Liquid Cooled 3 cylinder Diesel Engine 38.3hp & 107Nm
 Green Climber LV500	Remote controlled machine with tracks and flail mower, extendable undercarriage 1300-1700mm, hydraulic side shifting of accessory 800mm, Yanmar Liquid Cooled 4 cylinder Diesel Engine 49.5hp & 143Nm
 Green Climber LV600	Remote controlled machine with tracks and flail mower, extendable undercarriage 1300-1700mm, hydraulic side shifting of accessory 800mm, Kohler Liquid Cooled 3 cylinder Diesel Engine 56hp & 225Nm



MODELLO		F300	LV300	LV300pro	LV500	LV600
A - max. height	mm	1040	1040	1040	1050	1100
B - lenght without accessory	mm	1372	1396	1580	1710	2160
C - lenght with accessory	mm	1718	2436	2630	2700	2910
D - Flail width	mm	1110	1200	1200	1350	1350
E - minimum machine width	mm	1570	1150	1150	1300	1360
F - maximum machine width	mm	1570	1550	1550	1700	1760
Dry weight	Kg	510	680	780	1210	1292
Max working gradient	grades	60°	60°	60°	60°	60°
Accessory sideshifting	mm	/	400+400	400+400	400+400	400+400
Speed	Km/h	9	9	9	9	9
Engine Diesel		Kohler	Kohler	Yanmar	Yanmar	Kohler turbo
Cylinders	n.	2	2	3	4	3
EPA - TIER 4		Yes	Yes	No	No	Yes
Engine power	Hp	23.5	23.5	30.2	49.5	56
Engine torque	Nm	67	67	85	143	225
Cooling system		Air	Air	Liquid	Liquid	Liquid
Fuel tank	Lt	15	15	21	38	38
Hydraulic oil tank	Lt	12	12	17	47	47
Flail weight	Kg	110	130	1150	230	230
Flail speed	rpm	3000	3000	230	3300	3300

In 4th quarter of 2017 the models F300 and LV300 will be dismissed

GREEN CLIMBER STRONG POINTS:

Widening tracks *



The **widening undercarriage tracks** make Green Climber unstoppable on any slope. If in extreme situations the width of 1300mm is not enough to avoid

capsizing risk, the track width can be increased to 1700mm to gain stability and balance. Green Climber has the lowest centre of balance among its category. The movement is remote controlled.

Attachment side shifting*



Green Climber allows many movements with the accessory: lifting, tilting and side-shifting. All movements are remote controlled.

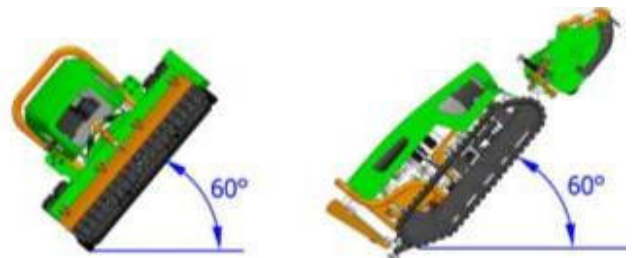
The side shifting allows up to 400mm of side shifting on each side.

The side shifting has 2 advantages:

- it allows to work in areas where the machine cannot move: nearby ditches, walls or under structures that are lower than the machine (solar panels guard-rails etc)
- it balances the machine weight when working in extreme slopes (moving it to uphill direction)

Perfect traction on extreme slopes

Working angle: we experienced working on slopes unbelievable steep and on all our communications we say that machine can work up to 60°



Remote control



The remote control system can reach a distance of 300 mt and controls start/stop engine, acceleration, and all the movements of the attachment. Furthermore, it has a self-correcting steering system that, in the case of a very steep



slope it can be used to correct the direction.

There is a battery charger for the remote control on board always to have a freshly charged battery available

Diesel engines



The engines have a patent system to assure engine lubrication on extreme slopes. The Kohler engine is also complying with EPA and TIER4 emission norms.

The engine, the radiator and the pumps are fixed to the main frame with high quality silent blocks.



Long working time



Fuel tank with 38 lt allows the machine to work up to a full day (depending on working conditions).

Mower *



Professional mower for roadside maintenance capable of cutting grass, bushes, canes and small trees (up to 6-8 cm diam.)



Forestry shredder to cut bigger diameter trees up to 15/25 cm. Different knives and hammers available.



Flail floating system*

The flail floating is fully hydraulic (no mechanical stress)

It can be set in 2 ways:

- 1) Free floating up-down
- 2) Free up floating and memorized height down floating

Air filter



Double step air filtering system to assure a good "engine breathing" with "spin" pre-filter system. It has a rotating device that avoids debris to enter the main air filter; it improves the engine performance and reduces fuel consumption.

Hydraulic system

The hydraulic system is fully proportional allowing the operator to have smooth movements and to control the machine drive and attachments perfectly.

The tracks traction motors have electronic variable speed (EVS) rather than 2 speed. The EVS always gives the maximum torque and power at any speed.

The whole hydraulic system is designed to work with lower temperatures and this will have benefits on the system itself and all parts will last longer.

Automatic cleaning system for the radiator: "CLEANFIX"

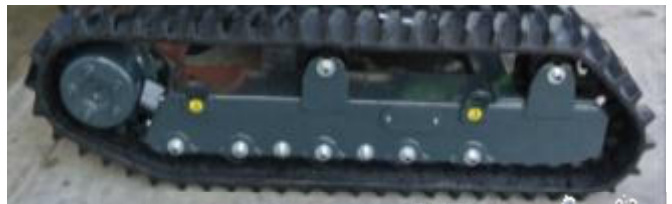
The system reverses the air flow automatically and cleans all debris from it. If needed the cleaning of the radiator can be manually actuated also with a button on the remote control.

When the radiator is kept clean there is lower fuel consumption and lower engine temperature.



Undercarriage:

A special design patent undercarriage to avoid any de-tracking risk in extreme steep conditions



Availability of different types of tracks

Standard profile (rubber)

High profile (rubber)

Metal spikes



Wheel undercarriage:



The tracked undercarriage can be easily swapped with a 6 wheel drive undercarriage (Power 6). The wheels undercarriage still has good traction and is less aggressive on the ground, and Green Climber can be used on delicate terrain like gardens or even golf courses.



Quick coupling hydraulic attachments

Green Climber can use any type of attachment that comply with its power and weight. All attachments can be easily attached: the Green Climber comes with a fast coupling plate and a fast coupling hydraulic system.



Additional Green Climber's specs included in price

- Hood that covers and protects the engine, air filter, etc;
- 4th pump for services;
- Headlights to work even when it is dark;
- Rollbar;
- Towing hook;
- Electronic control panel + beepers + warning lights which give information about the state of the machine: low fuel level, oil pressure, overheating, etc.;
- Battery charger on board the machine for the remote control complete with extra battery so that there's always a charged battery available;
- Emergency cable to be connected to the remote control that allows to use all remote control commands and buttons;
- All electric/electronic components have fast coupling systems to be easily changed.

		
fresatronchi	arganoforestale	fresa
		
rasaerba	benna	scavatricelineare
		
atomizzatore	turbo-neve	spazzatrice

Green Climber advantages:

- it only requires a single operator to perform the work of 10 people!
- it is not necessary to block the lane and therefore does not create traffic congestion
- it can be easily transported on a trailer or small van
- it can reach areas with very steep slopes (up to 60°) in any direction
- 10 times faster in performance compared to traditional systems
- maximum safety: the remote control and the special protection of the mower deck prevent objects being thrown towards the operator;
- agility to avoid obstacles such as trees, road signs or other objects
- low operative costs compared to traditional systems
- total safety for operators in any circumstance
- it can work at longer distance compared to boom mowers
- Operative costs much lower than tractors with boom mowers
- High flexibility and productivity with all attachments (all movements are remote controlled)

